



**Motic®**  
MORE THAN MICROSCOPY

## Moticam 1080INT

FULL HD CAMERAS

The Moticam 1080 INT is an intermediate multi-tasking microscopy camera for BA Series, that delivers an impressive 1080p Full HD fast live image with maximum colour fidelity on an integrated LCD screen.

It does not require a computer for standard operation, as it comes with an on-board software that will allow you to use it through its 11,6" Full HD integrated screen, with a mouse connected to the USB port of the camera.



[www.moticamseries.com](http://www.moticamseries.com) | [www.moticeurope.com](http://www.moticeurope.com)

## FULLY INTEGRATED DOCUMENTATION STATION FOR BA SERIES





## Moticam 1080INT TECHNICAL SPECIFICATIONS

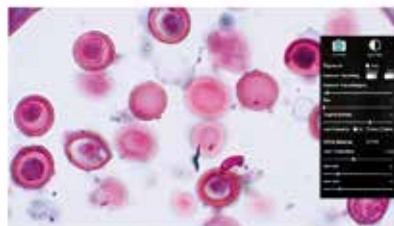
<b>Sensor Type</b>	CMOS
<b>Sensor Size</b>	1/2.8"
<b>Capture resolution (on SD-card)</b>	Still Image: 8.0MP (3840 x 2160) / Video: Full HD 1920 x 1080
<b>Live Display Mode (through USB)</b>	1920 x 1080 (Full HD) @ 30 fps*
<b>Live Display Mode (through HDMI)</b>	1920 x 1080 (Full HD) @ 60 fps*
<b>Pixel Size</b>	2.8µm x 2.8µm
<b>Data Transfer</b>	HDMI (1080p) and USB2.0
<b>Slot</b>	SD Card (max 32Gb)
<b>Supported OS</b>	Microsoft Windows XP SP3/Vista/7/8/10 and MAC OSX & Linux
<b>Minimum Computer Requirements</b>	2GHz dualcore – RAM memory 2GB – Video memory min. 512 MB
<b>Screen</b>	LCD 11,6" Full HD
<b>On-board software</b> (Camera connected through HDMI to a HD screen and through USB to a mouse)	<b>Standard tools</b> Still image capture, Live image record, Zoom in & out, Magnifier, ROI, Mirror, Rotation, Split, Freeze, Cross line, Gallery.
	<b>Image adjustments (AE/AWB)</b> Auto/Manual Exposure mode, Gain, Target Brightness setting, Light Frequency, Auto/Manual White Balance mode.
	<b>Advanced settings</b> Saturation, Contrast, Gamma, Sharpness, Denoise, User settings, System's Time setting, Language (English, Chinese and Japanese), Format SD card.
<b>Package Includes</b>	HDMI cable, USB 2.0 Cable (A male to A male Cable), Calibration Slide, Universal Power Supply, Motic Images Plus 3.0 for PC/OSX/Linux

*\*frames per second  
under optimal illumination conditions*

### ON-BOARD SOFTWARE & MOTIC IMAGES PLUS 3.0 SOFTWARE

#### On-board software

The Moticam 1080 INT has its own built-in software, making it possible to view live images, make image adjustments or edit them. You can also capture images or record videos directly from a screen with the help of a mouse, storing them in an SD card.



### THE [AllinOneBOX] CONCEPT

Everything that you may need to work with your Moticam is included in one box



#### Motic Images Plus 3.0

By connecting your Moticam to your computer you will be able to work with our well-known software, that comes included in the package. View, capture, edit, measure, make reports... all its standard features and the new ones packed in a new user-friendly interface.



Canada | USA | Europe | China



[www.moticmicroscopes.com](http://www.moticmicroscopes.com)

**Motic Instruments, Inc. (Canada)**

130-4611 Viking Way, Richmond, BC V6V 2K9 Canada  
Tel: 1-877-977-4717 | Fax: 1-604-303 9043  
info@motic-america.com

**Motic Instruments USA Inc.**

6508 Tri-County Parkway Schertz, TX 78154 USA  
Tel: 1-800-275-3716

**Motic Europe (Spain)**

C. Les Corts 12, Pol. Ind. Les Corts. 08349 Cabrera de Mar, Barcelona, Spain  
Tel: 34-93-756 6286 | Fax: 34-93-756 6287

**Motic Incorporation Ltd. (Hong Kong)**

Unit 2002, L20, Tower 2, Enterprise Sq. 5, 38 Wang Chiu Rd, Kowloon Bay, Kowloon  
Tel: 852-2837 0888 | Fax: 852-2882 2792

Design Change: The manufacturer reserves the right to make changes in instrument design in accordance with scientific and mechanical progress, without notice and without obligation.

Motic Incorporation Limited Copyright © 2002-2019. All Rights Reserved.

Updated: October 2019

